

NEWQUAY BAY APARTMENT

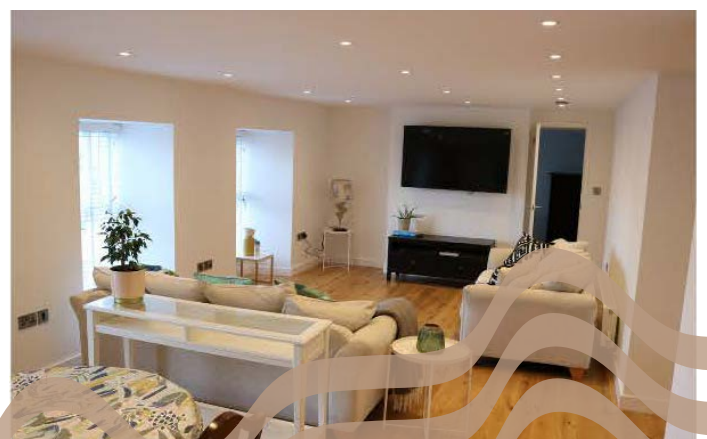
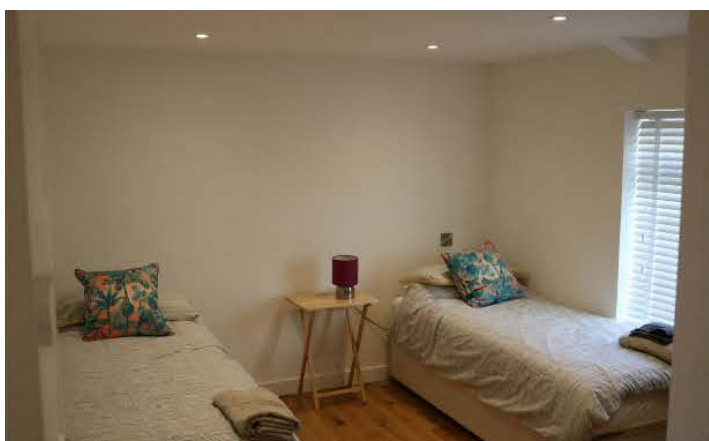
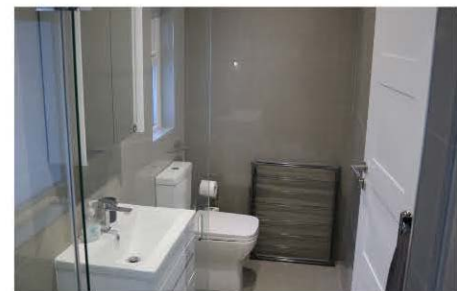
ACCOMMODATION



Large 2 bedroom apartment sleeping 4 in twin beds

4 minute walk from Towan Beach and 10 minutes to Fistral Beach. In the heart of Newquay close to shops and cafes

Newquay Bay Apartment is a modern, quiet, two-bedroom property that benefits from brand new fixtures and fittings due to a complete refurbishment in 2021. There is a new and modern kitchen as well as a brand new bathroom. The apartment is just a two-minute walk to Newquay Harbour where you will find one of our favourite wild swimming spots and idyllic ocean views. In the opposite direction, but just as close, you'll find Newquay Town Centre with an abundance of coffee shops, restaurants and surf shops



SUNSET VIEWS APARTMENT

ACCOMMODATION



Large 2 bedroom, 3rd floor apartment, sleeps 4

**8 minute walk from Fistral Beach.
Stunning views from a private South-facing balcony of Pentire Headland & Fistral Beach**

Our first apartment overlooks Pentire Headland and benefits from lots of natural light in a spacious living area. This two-bedroom property is perfectly located close to Fistral Beach and Newquay Town Centre; ideal for a post-lesson surf or a bite to eat in the evening. Both the Gannel Estuary and Crantock Beach are within a five-minute walk too, with the coastal path or main road being accessible from the apartment.

